

APPLICATION FORM - Submission Details

Submission Date : 11/03/2019 1:20 am

Unique Submission ID	279
Terms and Conditions acceptance	Yes
First Name	Monique
Middle Name	
Last Name	Kelly
Artistic Name	
Team Members	3
Nationality	New Zealand
Gender	Female
Date of Birth	
Mobile Number	
Country	New Zealand
State / Province	Otago
Town / City	Wanaka
Street Address 1	
Street Address 2	
Postcode / Zip	
University (just for students)	
Document	
Document Number	

Prize Category	Design
Project Title	design #1
Source of the used material	Japan
Type of plastic involved	Bio-based polycarbonate resin derived mainly from plant-based isosorbide.
Other materials involved	Flax fibre composites for the legs and back and recycled brass fittings.
Years of production	First production run began in February 2019
Edition	Edition #1
Weight and Dimensions	3kg, W41cm x D49cm x H89cm
Manufactured by	Monique Kelly
Describe your project accurately and how you developed your idea	<p>Inspired by the timeless beauty of the classic Bistrot chair, design #1 was born from the earth: the back rest and legs are made from linen composite fibres, harvested and woven in Europe. The bio-based resin we use to make the seat comes from Japan. The metal detailing is recycled brass, made from scrap metal. The starting point for the design was that it had to be circular, so we designed the chair to last and to evolve. We started with the part of the chair that will be damaged the most. A bit like the cane seat in the traditional bistro chair, we've made a seat and lumbar support you can replace easily. With a simple twist of an allen key the seat and lumbar support come off. We had to then think of a business model that would incentivise the user to repair rather than replace. If the part becomes damaged, the user sends us the old seat or back rest. In return, they receive a discount on a replacement that will cover the cost of postage. We send them a new seat or backrest and the customer gets a 'new' chair. We recover the materials and can put them back into the production cycle. We have also used innovative technique to embed a pattern into the resin. The pattern was designed by New Zealand artist, Leigh Cooper. It tells the story of flax, from the seed to a weave. The pattern increases the scratch resistance of the seat, which increases the lifespan of the part. The design of the chair was a collaborative effort between Alex Guichard, Monique Kelly and Philippe Guichard with the engineering support of Globex Ltd.</p>

Picture 1 - Cover



Picture 2 - Designer Portrait



Picture 3



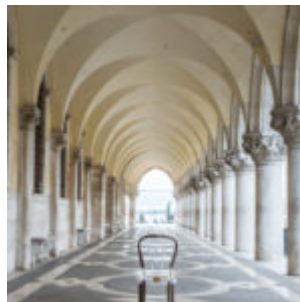
Picture 4



Picture 5



Picture 6



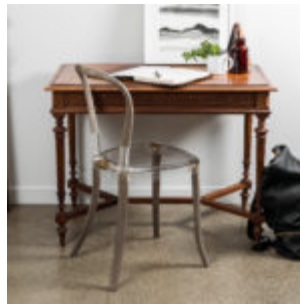
Picture 7



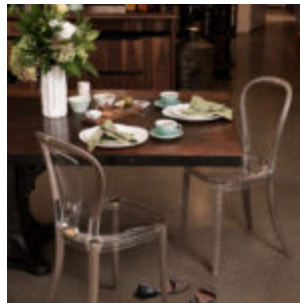
Picture 8



Picture 9



Picture 10



URL

<https://revology.com>

URL

https://www.youtube.com/watch?v=M4dos_DL2ds

URL

URL

Email

Modified Date